

VK Erica



Embrace Luxury Living



Erca
Where
Every Detail
Resonates with
*Sophistication
&
Comfort.*



VK Infrastructures,

Visakhapatnam led by **Mr. V.V. Rama Rao** and **Mr. K. Tataji**, has emerged as a prominent force in the local real estate sector since its establishment in the 20th century.

Known for its unwavering commitment to excellence, the company prioritizes timely project completion, transparent service, meticulous design, and exceptional customer care. VK Infrastructures stands out for fostering enduring relationships with clients, envisioning and constructing spaces that not only showcase architectural brilliance but also meet the evolving needs and aspirations of its clientele. As a trailblazer in the industry, VK Infrastructure continues to reshape skylines and create remarkable living experiences.



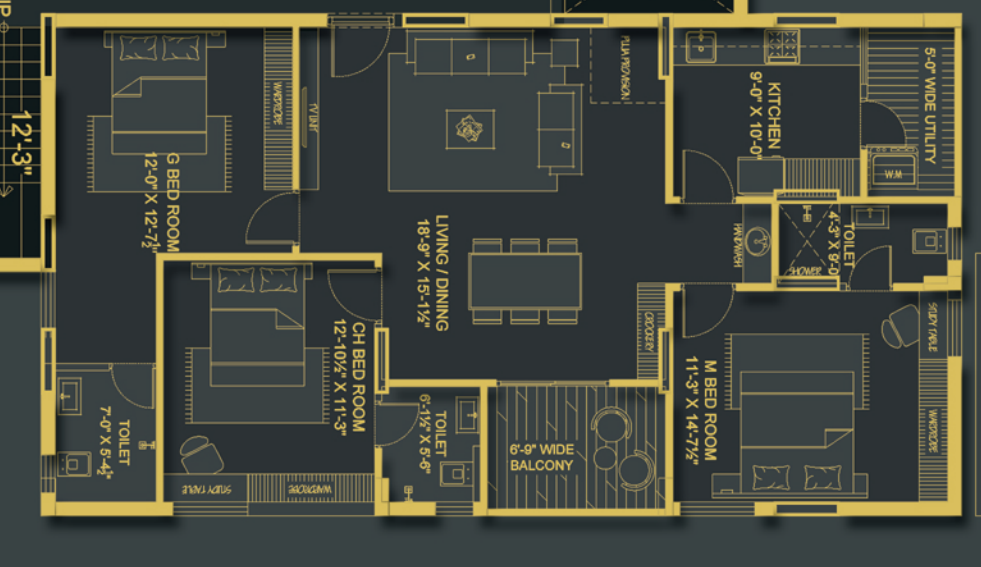
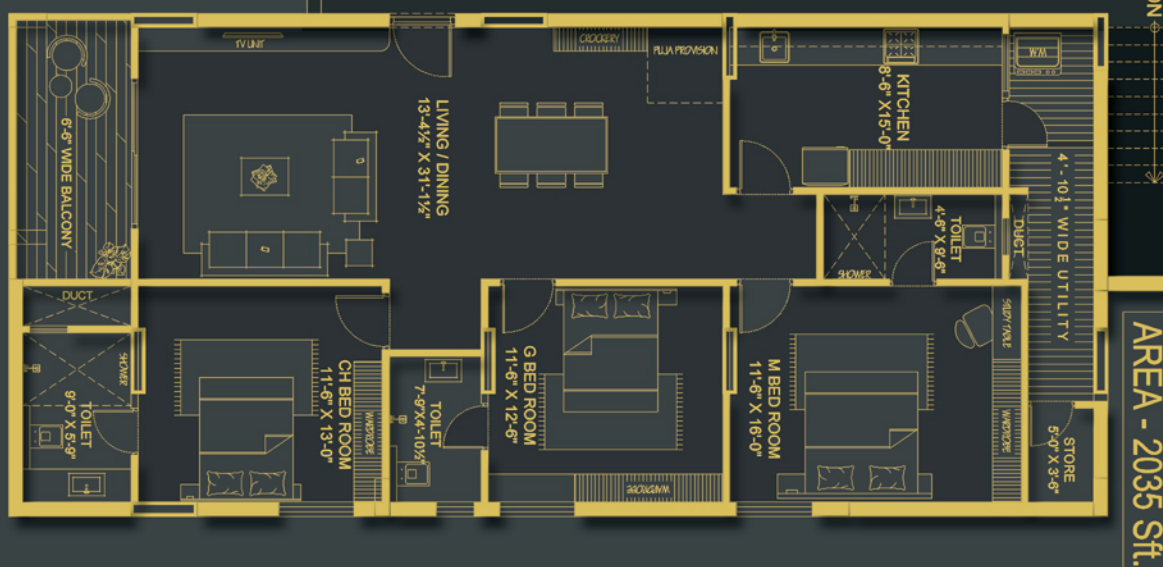
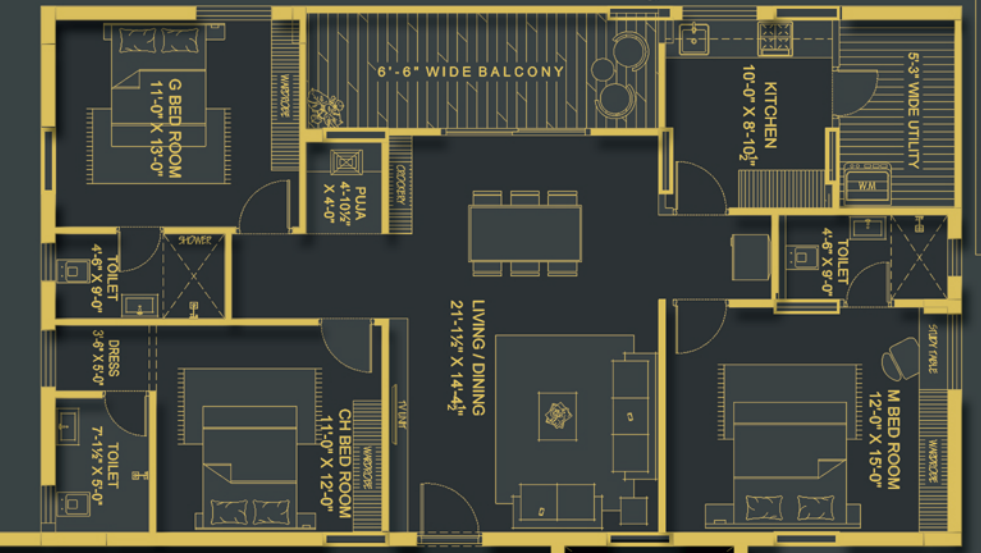
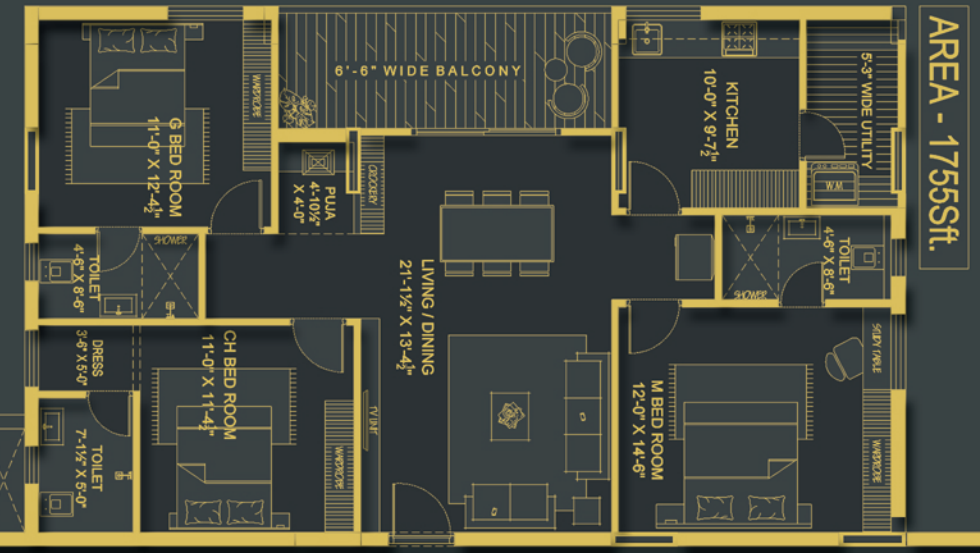
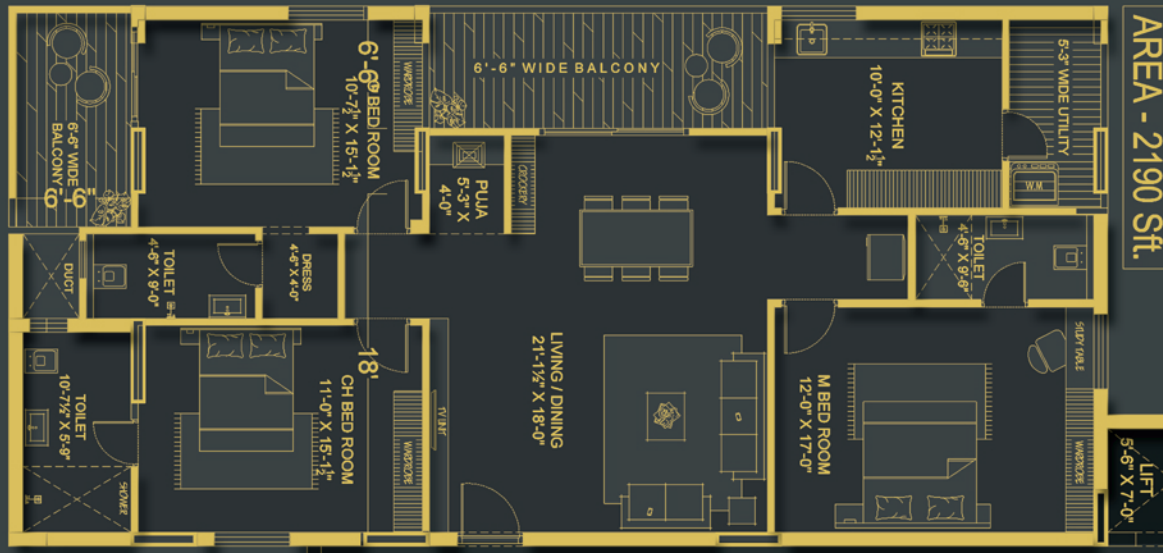
A Symphony of Elegance,
*Redefining Your
Home Experience*



Typical Floor Plan



WEST FACING



EAST FACING

60 FEET WIDE ROAD





Terrace Amenities

1. Terrace Garden
2. Terrace Yoga
3. Terrace Swimming Pool
4. Outdoor shower (Terrace)
5. Seating Areas
6. Outdoor BBQ Area with Setup
7. Star Gazing Deck with Telescope
8. Ambient lightings on terrace



Club House Amenities

9. Entrance Lobby
10. Banquet hall
11. Guest washrooms
12. Mini Theatre
13. Indoor Games & Multipurpose Room
14. Gym
15. Meeting Room





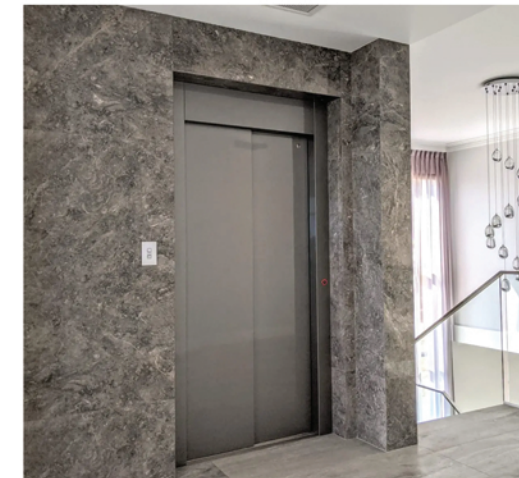
Outdoor Amenities

- 16. Half Basket Ball Court
- 17. Badminton Court
- 18. Fish Pond
- 19. Kids Sandpit
- 20. Seating Area
- 21. Fountain
- 22. Outdoor Artwork & Sculptures
- 23. Vertical Garden Wall



Other Amenities

- 24. Grand Entry
- 25. Seating Area
- 26. Indoor Mail Box
- 27. 24 x 7 Public Areas
CC TV Surveillance
- 28. Premium Lifts
(One Regular & One Service Lift)
- 29. Intercom Facility
- 30. One Car Parking (100 Sft.)
- 31. Emergency First Aid Kit
- 32. Doctor on call
- 33. Corridor Cellings







Super Structure

Super Structure: In table moulded bricks with cement, mortar 9" thick for exterior walls and 4" thick interior walls.

Wardrobes

Structural provision for wardrobes.

Doors & Windows

Doors:

1. Main Door: Main door frames of Teak wood and HDF skin moulded paneled shutter/Teak paneled shutter with melamine polishing & designer hardware of the standard brand, Granite frames for Bathroom Doors.
2. Internal Door: Well seasoned wooden frames with waterproof flush shutters.

Windows:

Aluminum powder coated windows / UPVC sliding with glass with safety grills (M.S) with enamel paint finish.

Flooring

1. Living, Bedrooms & Dining: 2'6" x 5'6" (Feet) size vitrified tiles of the standard brand.
 2. Bathroom : 2'0" x 4'0" (Feet) size vitrified tiles of the standard brand.
 3. Balcony & Utilities: Acid-resistant, anti-skid ceramic tiles of the standard brand.
 4. Corridors, Staircases & Lift Lobbies : Granite / vitrified flooring.
- Kitchen: Black granite platform with stainless steel sink with 2' height dadoing.

Bathrooms:

1. Tile dado up to 6ft height.
2. Wash basin of Jaquar or equivalent make.
3. All W.C of Jaquar or equivalent make.
4. Hot and cold wall-mixer with shower.
5. All C.P fittings of Jaquar or equivalent make.

Electrical

1. Concealed copper wiring with PVC insulated wires and modular switches of reputed make.
2. Two way switches for fan and light in bedrooms.
3. Power points for cooking range chimney, refrigerator, microwave ovens, mixer/grinders, water purifier, exhaust fan in kitchen, washing machine in utility area.
4. Provision for geyser points in bathrooms.
5. Provision for AC points in all bedrooms.
6. TV points in hall and master bedroom.
7. 3-phase supply for each unit and individual meter boards.

Painting:

External Walls: Acrylic emulsion paints for external walls.
Internal Walls: For internal walls, Acrylic emulsion paints in putty finish.
Doors: All doors & windows shall be painted with putty & enamel paint.

Access Points

1. Wi-Fi points in living room.
2. Intercom facility to all the units connecting Security.

Water supply

Bore / Municipal water with over-head tank will be provided.

Lifts

Sufficient number of high speed automatic passenger lifts with rescue device with V3F for energy efficiency of Johnson / Equivalent make.

Generator

Power backups for common areas and backup of 500 watts in each flat.

Security

CC Camera Surveillance for common areas.



ONGOING PROJECTS



VK AURORA - 60 FLATS

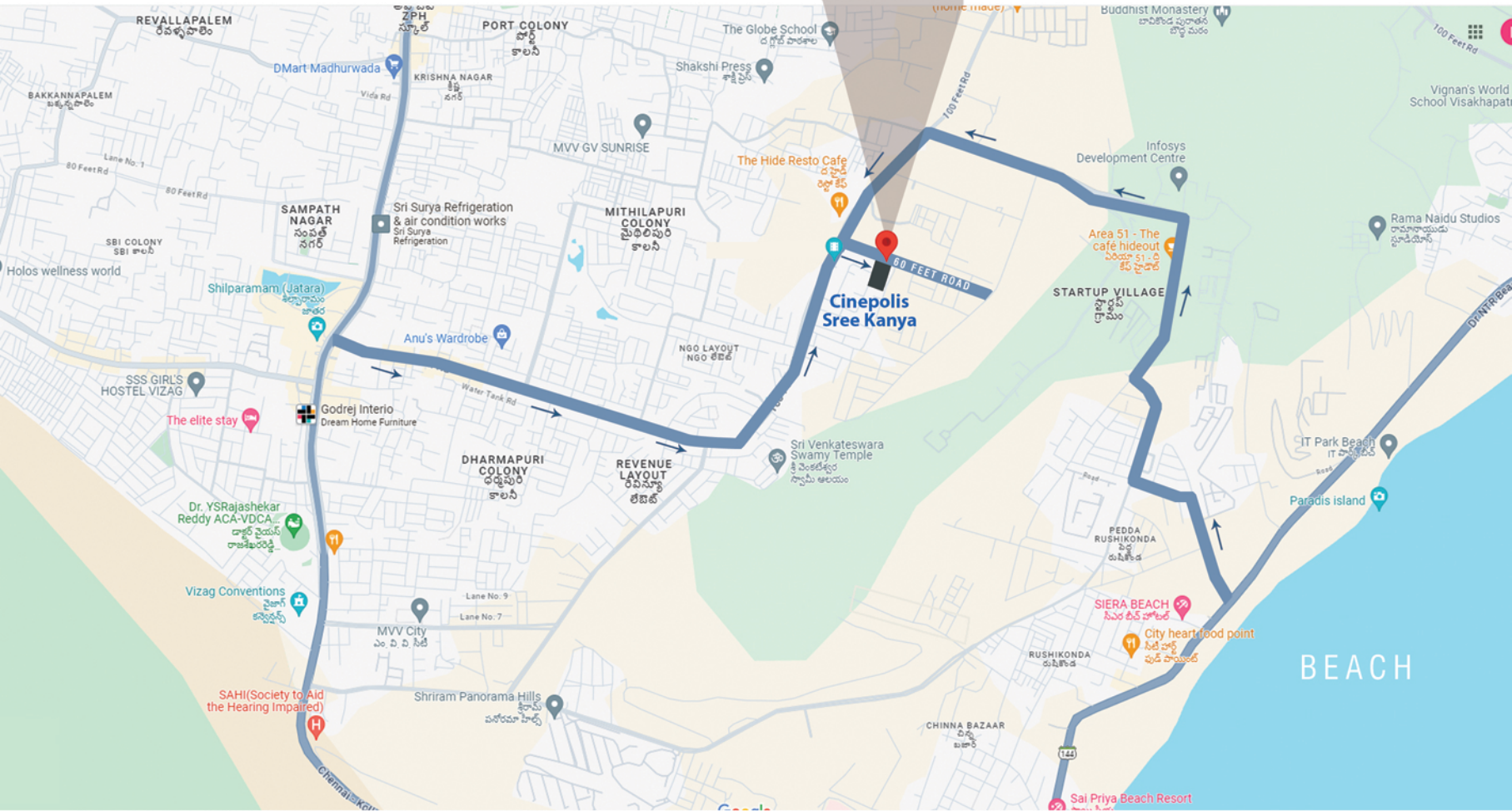


VK ERICA - 60 FLATS

PREVIOUS PROJECTS



LOCATION



Scan QR Code for Location



Builders



2-13-24, MIG-1A/16, Sai Lakshmi Nilayam
Beside MVP Super Market, Sector-6
MVP Colony, Visakhapatnam.
Ph : 90639 42189, 74164 29666
www.vkinfrastructures.in

Architects

Impact Architects

6-3-596/63/9, G2
Anugraha Apartment
Naveen Nagar, Erramanzil
HYDERABAD 500082
gimpact07@gmail.com Ph: 9849677227.

50-118-6/1, plot no-43
Seethammadhra (NE)
Near SBI Bank
VIZAG 530013

Structural Engineers

M.N.R. Associates

M. Srinivasa Reddy,
M.Tech., F.I.V.,
Visakhapatnam
Ph: 0891-2734170

Disclaimer: All information, visuals, and specifications mentioned in this brochure are indicative and are intended for promotional purposes only. The actual details may vary, and the developer reserves the right to make changes or alterations as deemed necessary without prior notice or obligation. Plans, layouts, and amenities shown are subject to approvals and may differ based on construction and design changes. Furniture, fixtures, and landscaping are for illustrative purposes only and are not part of the standard offering. The final discretion lies solely with the developer.